

Start by creating a Site Definition

Advanced Local Info

The screenshot shows the 'Site Definition for Week3' dialog box with the 'Advanced' tab selected. The 'Local Info' category is chosen in the left-hand menu. The 'Local Info' section contains the following fields and options:

- Site name:** Week3
- Local root folder:** G:\Week3\
- ☒ Refresh local file list automatically
- Default images folder:** (empty)
- HTTP address:** http://intshort.bcuc.ac.uk/~MyUserID/
- Cache:** ☒ Enable cache

Below the 'Cache' section, a note states: 'The cache maintains file and asset information in the site. This speeds up the Asset panel, link management, and Site Map features.'

At the bottom are 'OK', 'Cancel', and 'Help' buttons.

You can reload your Dynamic site from last week! Rename appropriately.

Requires Manually Typing in using the advanced option!

Advanced Remote Info

The screenshot shows the 'Site Definition for Week3' dialog box with the 'Advanced' tab selected. The 'Remote Info' category is chosen in the left-hand menu. The 'Remote Info' section contains the following fields and options:

- Access:** FTP
- FTP host:** intshort.bcuc.ac.uk
- Host directory:** public_html
- Login:** userName99
- Password:** (masked with asterisks)
- ☒ Save
- ☐ Use passive FTP
- ☐ Use firewall
- ☒ Use Secure FTP (SFTP)
- ☐ Automatically upload files to server on save
- ☐ Enable file check in and check out

Buttons for 'Test', 'Firewall Settings...', and 'Server Compatibility...' are also present.

At the bottom are 'OK', 'Cancel', and 'Help' buttons.

Your user ID and private password!

Advanced Testing Server Tab

Site Definition for Week3

Basic Advanced

Category: Testing Server

Local Info
Remote Info
Testing Server
Cloaking
Design Notes
Site Map Layout
File View Columns
Contribute

Server model: PHP MySQL

Access: FTP

FTP host: intshort.bcuc.ac.uk

Host directory: public_html

Login: userName99 Test

Password: ***** Save

☐ Use passive FTP

☐ Use Firewall (in Preferences)

☒ Use Secure FTP (SFTP) Important Select SFTP

Server Compatibility...

URL prefix: http://intshort.bcuc.ac.uk/~MyUserID/

The URL Prefix is the location of the site's root folder on the testing server.

Note:
Dreamweaver fills in this field incorrectly.
Manually type in the details.
Leave page Blank (None) if not using PHP & MySQL

OK Cancel Help

Use the Test option to confirm your settings work OK?.

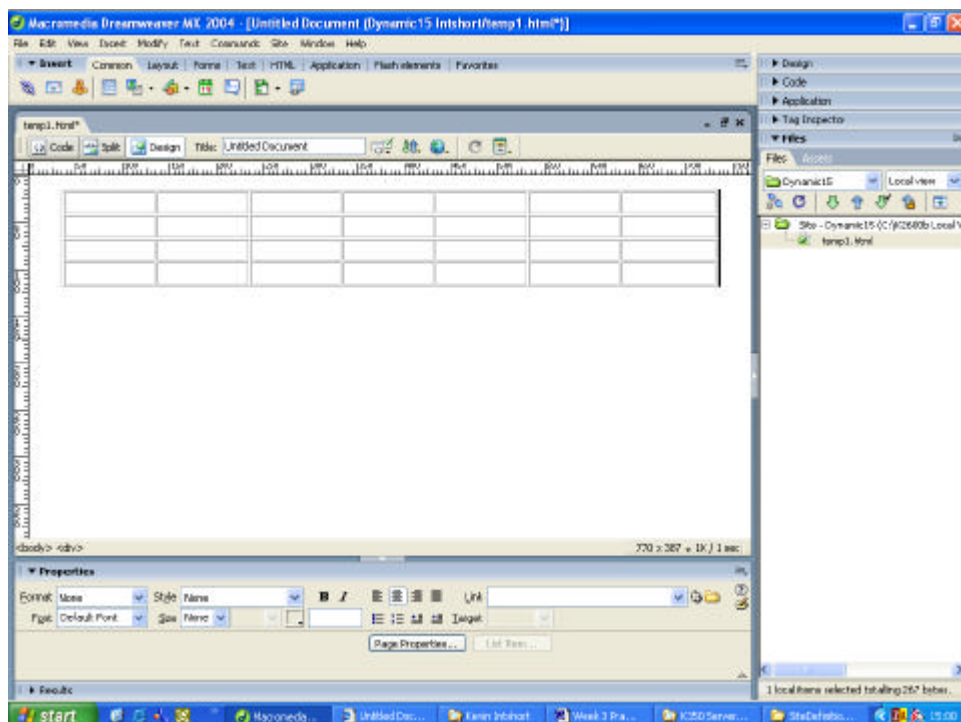
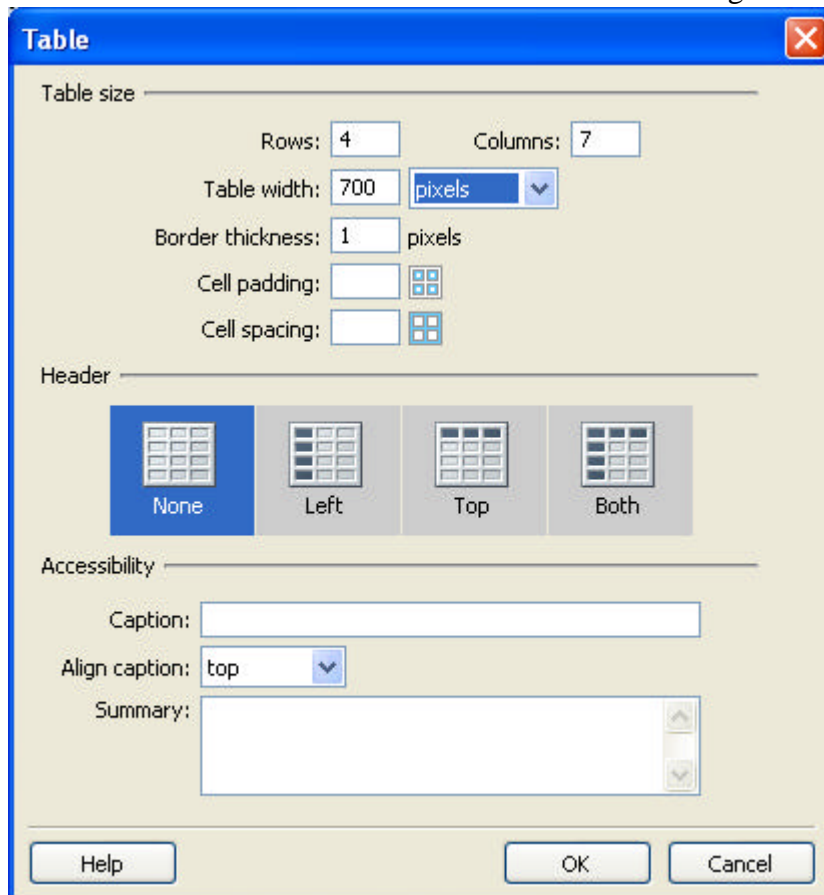
Create and apply a site template.

We are going to create a template. Then using the template apply it to the home page *index.html* plus 4 more pages: *Topic1.html* *Topic2.html* *GuestBook.html* *ContactMe.html*

1. We will start by creating a blank page in our site *temp1.html*
2. Open *temp1.html* in design view.
3. Centre the cursor using align centre from the properties inspector.
4. Insert a table
 - ?? 4 rows
 - ?? 7 columns
 - ?? with a width of 700 pixels (check this is pixels and NOT %)

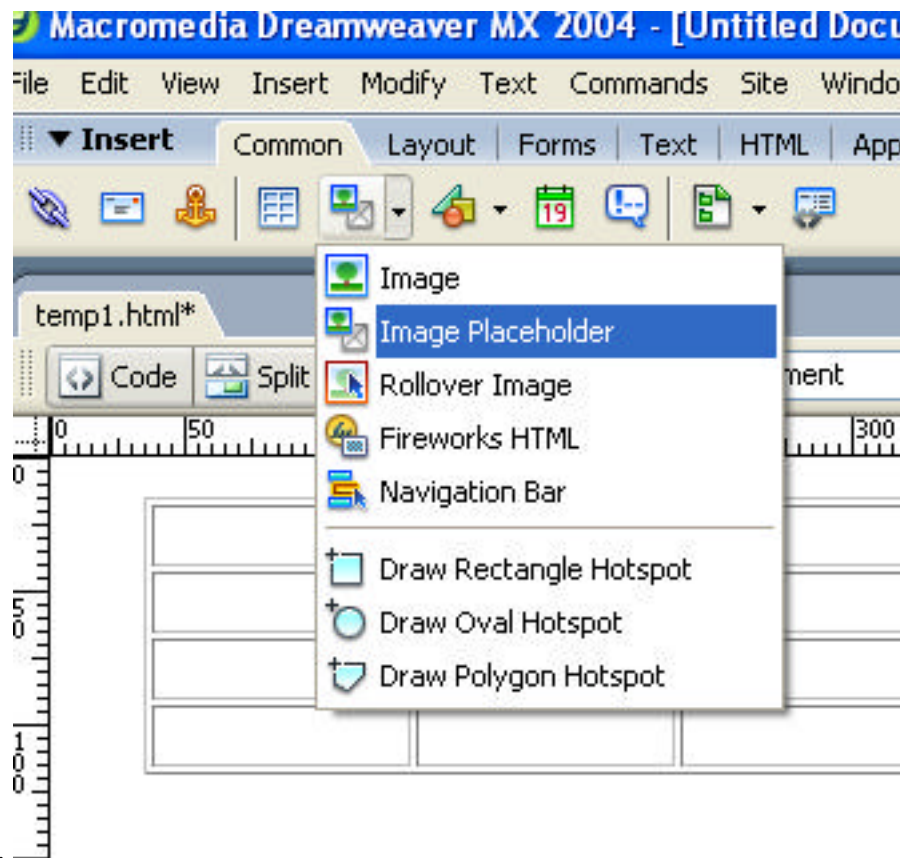
Dynamic Web Page Design Week 3 Practical

- ?? Keep the border thickness set to 1 at this stage even if you require no borders in the final template. You will find it impossible to resize by dragging with the mouse with 0 size!
- ?? Use the blank defaults for the other settings



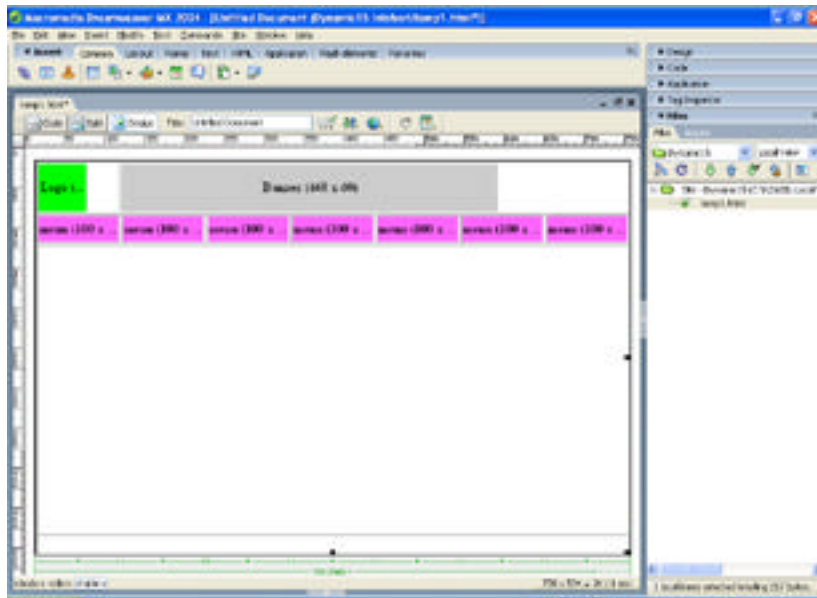
We will now size the table and fill the spaces using image place holders to create the outline design.

5. The first cell in the first row will be a logo. Place the cursor inside the cell then select **insert > image object > image placeholder** or via the common tool bar



6. Call this Logo and set the size for the placeholder to 60 x 60 pixels.
7. Next we are going to make one large cell spanning the next 6 columns of the first row. Click in the second cell of the first row then click and drag to select the rest of the cells to the right.
8. To merge the selected cells, from the top tool bar select: **Modify > Table > Merge Cells** or Right click and select **Table > Merge Cells** or use the keyboard short cut **Control + Alt + M**
NB (Keyboard short cut did not function correctly in the B20 lab!)
9. Insert a placeholder into the merged cells called Banner as before in step 5. The height will be the same as before 60 pixels and the width will be a maximum of 600 pixels.
NB: (The default size for a commercial banner is 60x468)
10. The second row will be populated by 7 placeholders 100 x 33 pixels. the first and last cell will have a 1x1 pixel transparent gif resized to 100 x 33 pixels. This is used for padding and to prevent the cell from collapsing or resizing.
11. All of row 3 is to be merged into one large cell as in step 8
12. Repeat again merging all of row 4 into a single cell.
13. Select row 3 and drag down the page pushing row 4 down ahead of it. Use the ruler on the left to gauge the size, about 500 pixels mark should be OK.
If you can't see the ruler you may need to turn it on > via top tool bar **View > Rulers**
NB: Also option to change measurement formatting.
14. Remember to save your changes as you go along. **Control S or File > Save**

You should now have something like this.



Part 2

Exchanging the placeholders by creating or importing images.

Having created the page skeleton we now need to flesh it out by creating the images and exchanging them with the placeholders.

You can use the example graphics in the graphics folder on the L drive in the Dynamic folder. However time permitting try making your own in Fireworks.

Items required:

?? Logo 60x60

?? Banner 60x600 max or 60x468 commercial size.

Buttons all 33x100

1. Home
2. Guest Book
3. Topic One
4. Topic Two
5. Contact Me

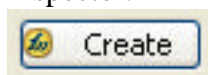
All sizes in pixels and the working file should be saved as a gif or jpg

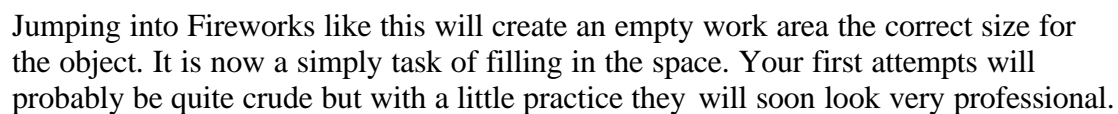
NB Fireworks also saves a png file for updating and editing the graphic latter!

You can use any program of your choice to create the graphics however as Dreamweaver is now so tightly integrated with Fireworks it is a simple matter to Jump back and forth between the two programs converting the placeholders on route.

Using Fireworks from Dreamweaver

Select the first placeholder to convert to a graphic by left clicking on it. Then either right click and select **Create Image In Fireworks** or use the button in the Properties Inspector.





Having created your logo select your choice of optimisation, changing the setting as required, then click the Button marked **Done**

You will now be asked to save the file **twice!**

?? The first save, saves all your layer information as a png file. *(This is very similar to the Photoshop psd format.)*

?? The second save, saves the file using the setting of your choice as highlighted by the box outline.

For simple shapes and text the gif format will probability give the best results.

Create A Banner

In a similar vein create a banner!



In this example the text was expanded to fill the area, then a drop shadow was applied plus a second effect, a blue outer bevel. All settings use the manufactures defaults. Again save into your images folder making the two format saves!

Create the Buttons

The first and last space in the button row will be blank. For these to spaces will insert a blank 1x1 pixel gif. You will find a transparent gif in the Examples Graphics folder. To use an existing image. Double click on the placeholder, then use the dropdown browser to navigate to the L drive > Short Courses .> Web Page Design Short Courses > Dynamic Web Page Design > Graphics > Buttons. Select the Transparent gif and click OK

Then read the pop up dialog box!



Say Yes and save to your images folder.

STOP at this point and read the next instruction!

Before clicking on anything set the size of the gif in the Properties Inspector!

In the properties Inspector type a height of 33 pixels and a width of 100 pixels.

As the image is only 1x1 pixel it is not so easy to select if you lose the focus.

Copy and paste the first transparent gif into the second blank space on the other side of the menu bar **deleting** the placeholder just prior to the paste!

Now create the Buttons graphics

1. Home
2. Guest Book
3. Topic One
4. Topic Two
5. Contact Me

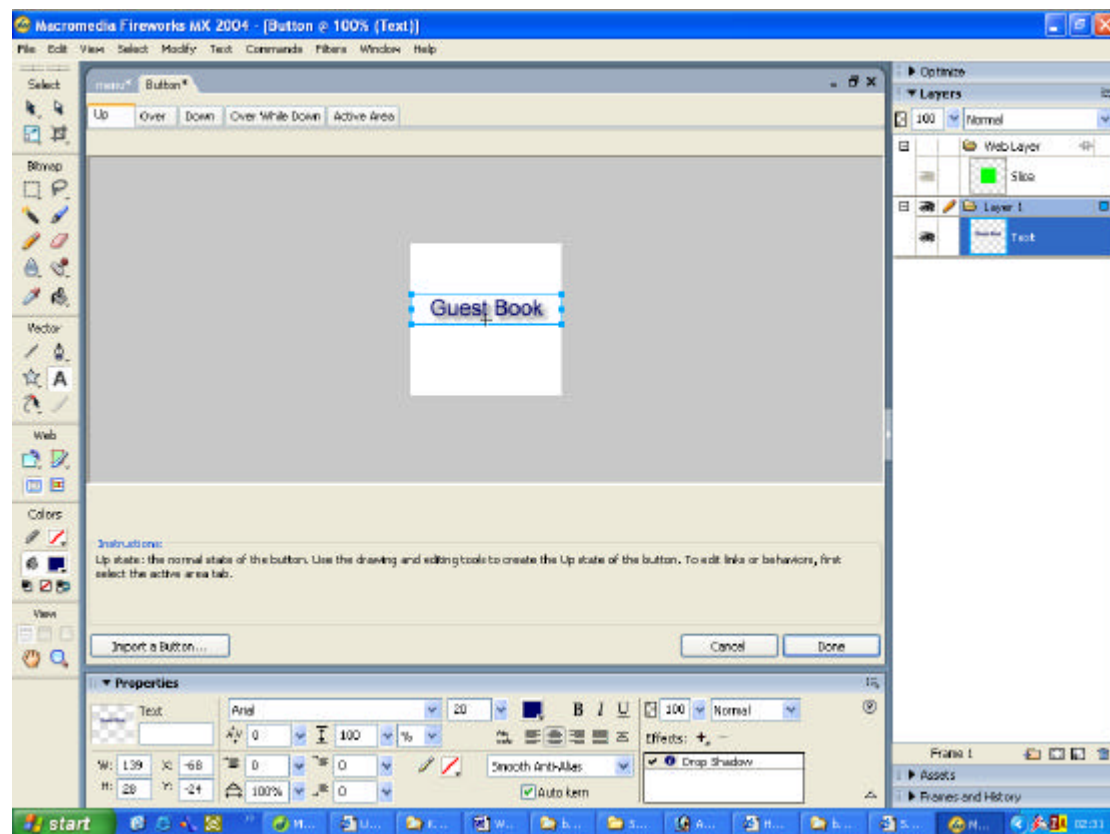
We have several choices for this. We can modify the supplied examples or use the button maker to design our own.

Which ever method you use for your button start with the longest text. Items 2 & 5 both have 10 characters so start with one of them.

Tip

Make notes of the setting for the first button as you go along. Then you can apply the same settings to the others for a professional uniform look!

Using the Option Create Button



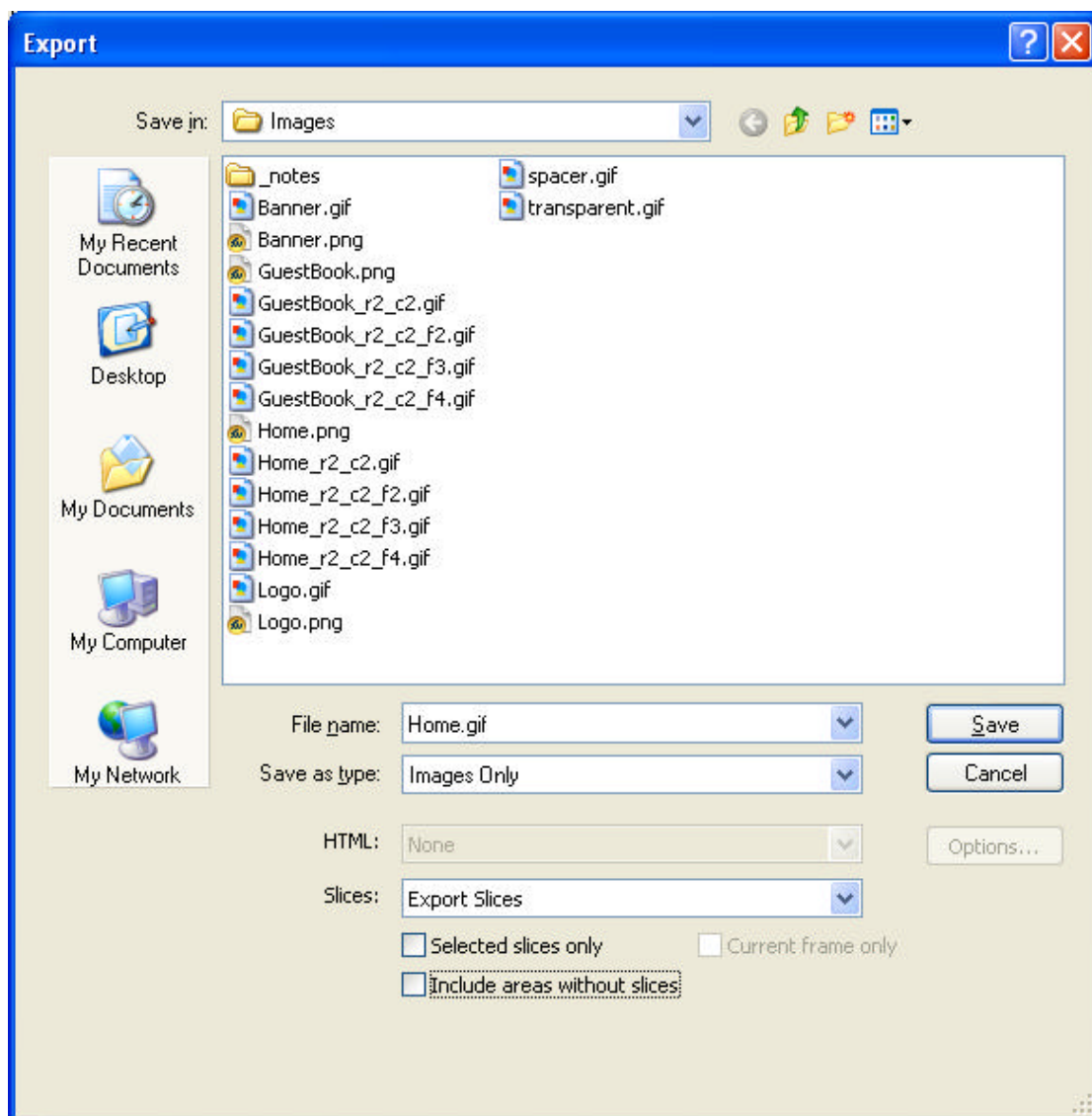
The wizard will help by stepping you through the process.

- ?? First create the **UP** state, Centre the text in a font and colour of your choice.
Try a size of 18 or 20 depending on font and weight
I have applied a drop shadow via the effects dialog box in the Properties Inspector and have the background set to transparent.
- ?? Next click on the **Over** tab to create the next state. Use the **Copy Up State** dialog button to copy forward the text from the over graphic. The simplest adaptation is just to cycle the text colour for this and the next button state.
A strong contrasting colour will work well for this
- ?? For the **Down** state I used a dark colour blend
- ?? For the **Over While Down** a Lighter colour blend

Dynamic Web Page Design Week 3 Practical

- ?? For the active area I have used the Automatic Default
- ?? Clicking **Done** steps you back to Fireworks main work area.
- ?? Clicking **Done** again steps you back to Dreamweaver
- ?? **Save** your graphics to your '*images folder*'. (*See screen shot below*)
You only need to save the graphs and do not require the HTML
- ?? The button behaviors are applied automatically to create the rollover for you.
- ?? **Save and test.**
Remember if you are using the testing server option to upload the graphics!

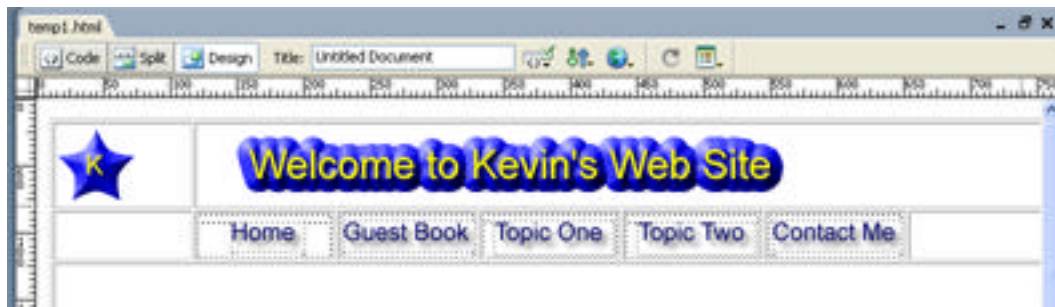
Up	Over	Down	Over & Down
Guest Book	Guest Book	Guest Book	Guest Book



To create the next four buttons again start by editing the place holder in Fireworks. But this time just open the first PNG file and copy and past for the next. All that is then required is to use the selection tool to display the text and modify for the next button.

Click Done and **Save** both files with a suitable name as you return to Dreamweaver. *Repeat for the rest of the buttons.*

You should now have something like this?



Again Don't forget to save your work!

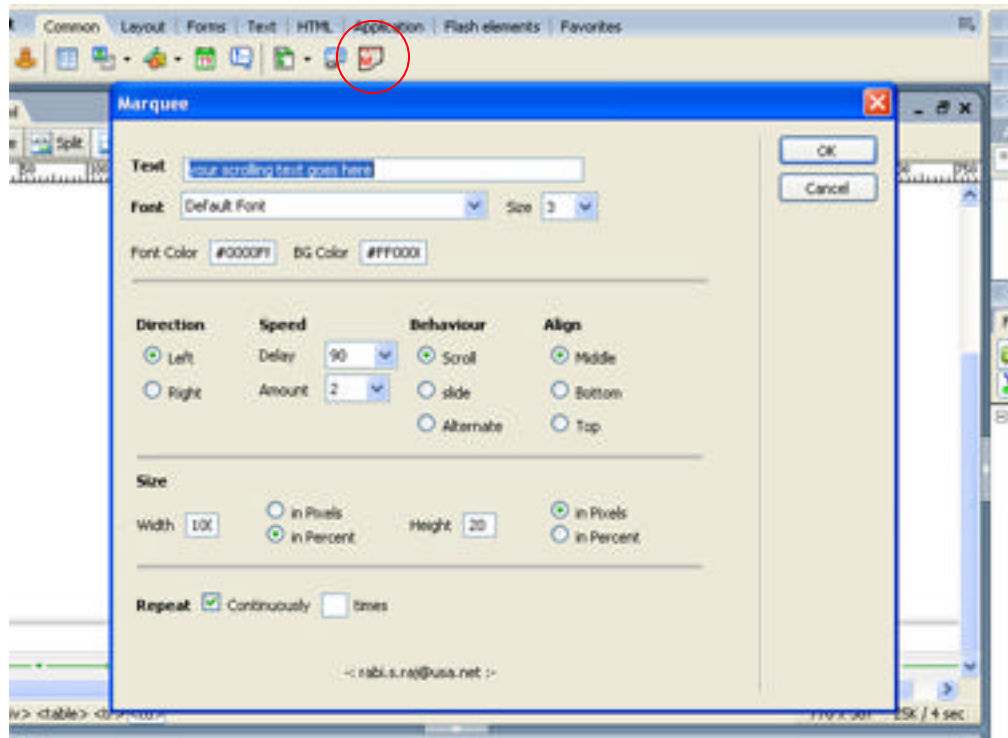
If you are going to use any Java scripts for drop down menus or for a Scrolling Marquee add them next!

In the bottom row I am going to add as scrolling marquee, so that is the next task!
We can hand code the Marquee tag as in week two of the Internet and Web Page Design Class or simply use a plug in.

Find and load by Double Clicking the file (MX16440_Marquee.mxp)

This extension will be found in the Dreamweaver Extensions folder on the **L drive**:
Short Courses > Internet and Web Page Design > All Groups > Dreamweaver Extensions

After installing place the cursor in the bottom row of your table and launch the plugin.
Complete the dialog box below as required.



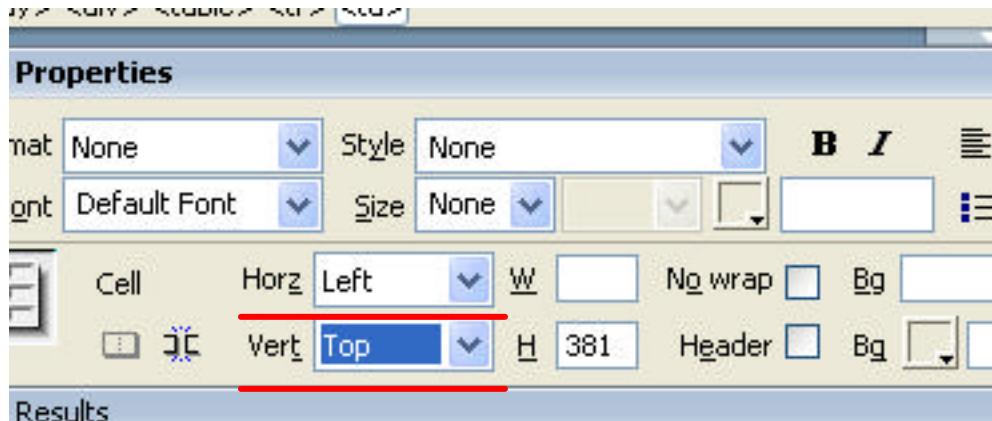
Again Don't forget to save your work! Then test the page in Internet Explorer.

If all works and looks OK we can add an editable region and convert the page to a template.

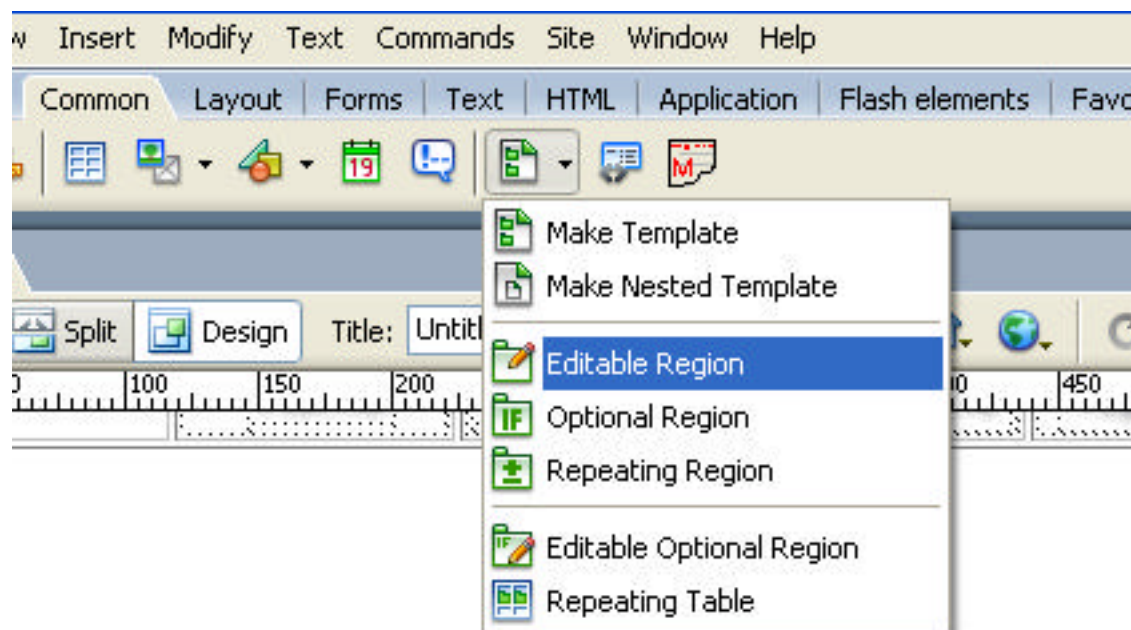
Creating an Editable Region

Place the cursor in the third row . It will almost certainly Align Middle, the default setting.

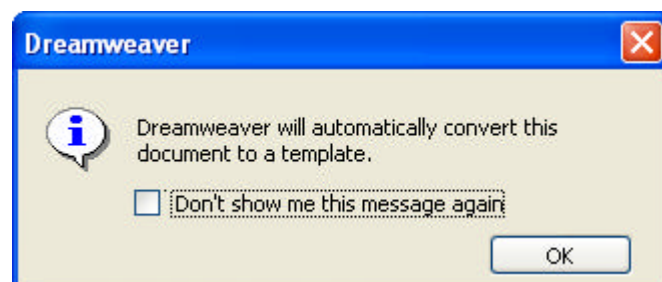
We will want the content to run down the page so change to **Align Top** and **Left**



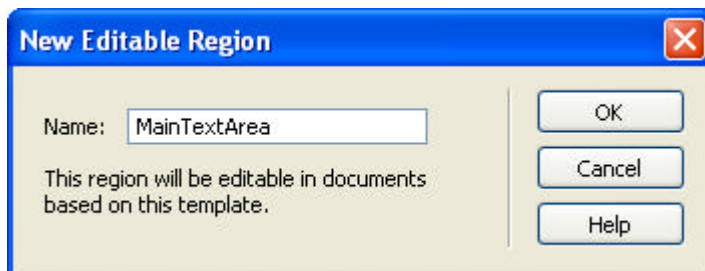
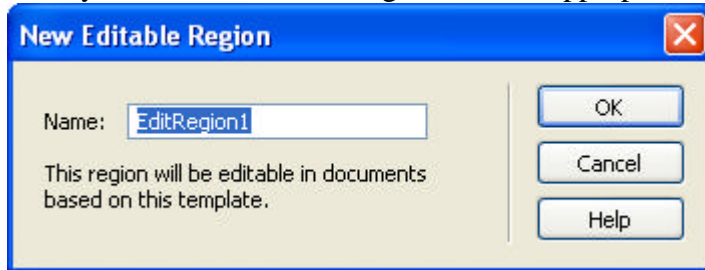
Next insert the editable region by selecting from the *Common Tool Bar > Templates > Editable Region*



Dreamweaver will then inform you it will convert the page, as detailed bellow.

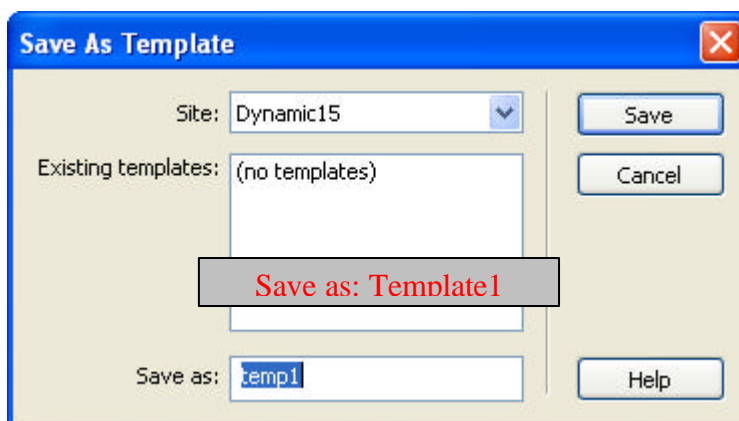


Finally name the Editable Region with an appropriate name.



Note: *The name must not start with a number!*

Finally we can save the page as a Template, call it something like Template1 and Dreamweaver will save it to a Template folder with the Extension dwt



Use Save and Dreamweaver will force you to save the page as a Template



Click Yes

You are now Ready to create the first five pages for your site!

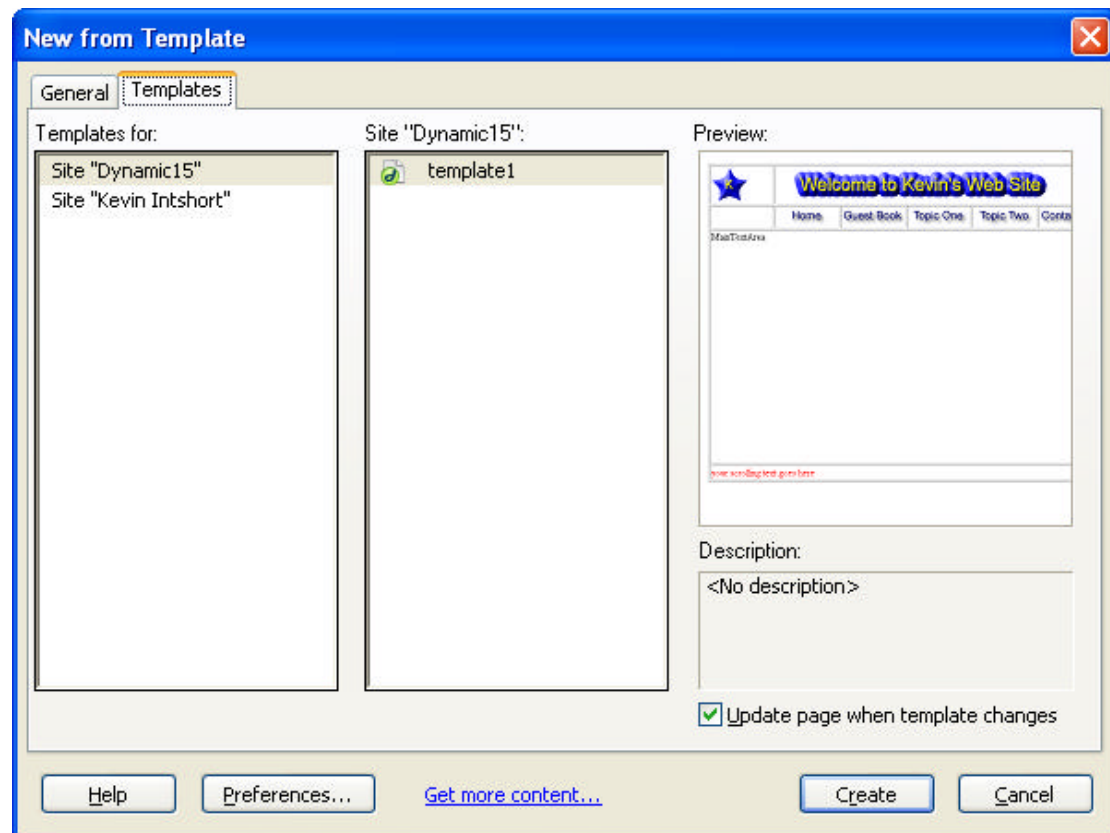
As we make the pages we will need to create and add the links to the template page. On saving the template all the pages will then be updated with the new hyperlinks.

You need to make the following pages:

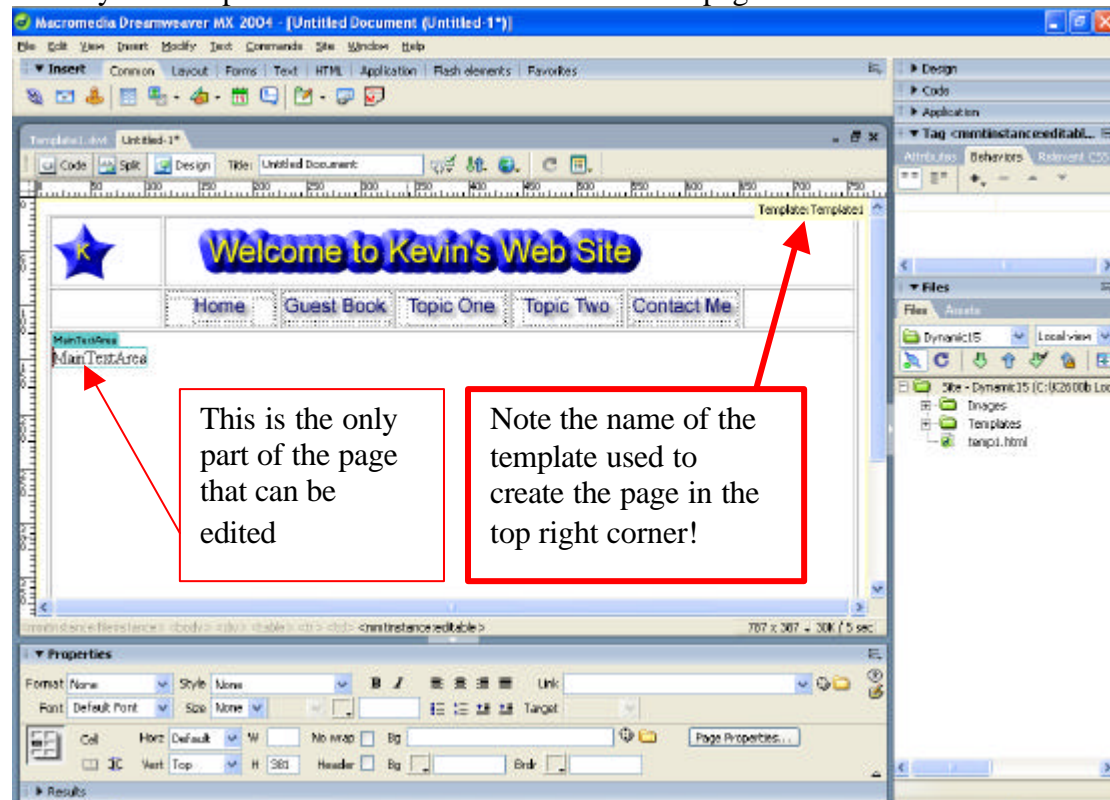
index.html (All lower case for the server) The Home Page and
GuestBook.html / Topic1.html / Topic2.html / ContactMe.html

Making your Pages and Updating the Links

From the Top Tool Bar **File > New** and select Templates



Select your Template and click Create to make a new page.



Save the page and 4 more as:

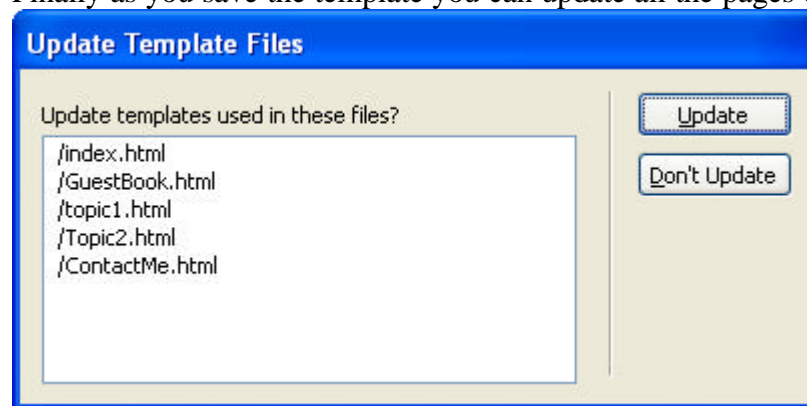
index.html (All lower case for the server) The Home Page and
GuestBook.html / Topic1.html / Topic2.html / ContactMe.html

Having created and saved your five pages **close** them before you make your hyperlinks.

Open your Template page and create the hyperlinks for the buttons you made earlier.
index.html / GuestBook.html / Topic1.html / Topic2.html / ContactMe.html

We could have added the hyperlinks as we made the buttons but doing it this way we can copy the links direct from the pages eliminating the risk of typing errors.

Finally as you save the template you can update all the pages created with it!



And the confirmation Box

